



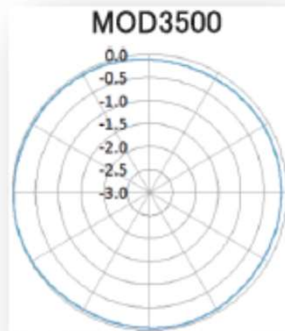
Omni & Biconical Antenna

Omni-antenna MOD series

At the horizontal element, MOD series are same pattern & gain with Dipole antenna.



MODシリーズ



Parameter	Spec.
Frequency range	715 - 3520MHz
Horizontal Dev. Gain	0.2dBp-p
Antenna gain	1.0dBi(Typ.)
VSWR	2.0 : 1 Max.
Impedance	50Ω
Interface	SMA(f)

Type	Frequency(MHz)
MOD722	715 - 730
MOD745	735 - 755
MOD768	758 - 778
MOD790	778 - 803
MOD882	869 - 895
MOD1500	1490 - 1510
MOD1842	1810 - 1875
MOD1960	1930 - 1990
MOD2140	2110 - 2170
MOD2655	2620 - 2690
MOD3500	3480 - 3520

Bi-conical antenna MBA series

MBA series cover wide band range with same pattern of Dipole antenna, small & light weight would be flexible to use for many application.



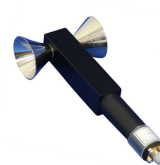
MBA101



MBA102



MBA201



MBA203



MBA301

Type	Frequency [GHz]	Connector	Impedance	Size (W x L) mm	Weight [g]
MBA101	0.5 - 2.0	SMA(f)	50Ω	150 x 150	80
MBA102	0.3 - 1.5			250 x 150	100
MBA201	1.0 - 6.0			40 x 150	80
MBA203	0.8 - 6.0			62 x 150	65
MBA301	0.03 - 1.0			250 x 150	250

MBA201

* MBA201 is a Biconical antenna, cleared the demand by CISPR regulation (CISPR16-1-4) at 1 to 6GHz bandwidth on **SVSWR method**.